



A PROJECT BY



[www.qgrouprealty.com](http://www.qgrouprealty.com)

## OUR STORY

### LEADING INDUSTRIAL EVOLUTION WITH VISIONARY GOALS AND ENDURING VALUES GOALS

# ABOUT MAPLE INDUSTRIAL ESTATE

Maple industrial estate is thoughtfully designed to cater the diverse needs of our clients, providing a wide range of industrial gala which suits your business needs . We understand the importance of cost effective solutions and have tailored our offerings accordingly, ensuring that businesses can thrive & grow within our premises

## VALUES

- ✓ **EXCELLENCE:** Delivering exceptional quality in every aspect of our services and facilities, which exceeds expectation of our clientele.
- 🕒 **CUSTOMER FOCUS:** Prioritizing our client needs and ensuring their satisfaction through personalized and attentive service.
- 💡 **INNOVATION:** Driving creativity and embracing forward-thinking strategies to provide cutting-edge solutions.
- 👁️ **INTEGRITY:** Upholding honesty, transparency, and ethical practices in every interaction and decision.
- 🤝 **COLLABORATION:** Building meaningful partnerships with clients, suppliers, and stakeholders to achieve shared success.
- 🌱 **SUSTAINABILITY:** Committing to eco-friendly practices to reduce our environmental footprint and protect our planet.
- 👥 **COMMUNITY:** Positively impacting the local community through active contribution and fostering sustainable economic growth.

# IGNITING PROGRESS IN INDUSTRIAL, LOGISTICS & WAREHOUSING SOLUTIONS

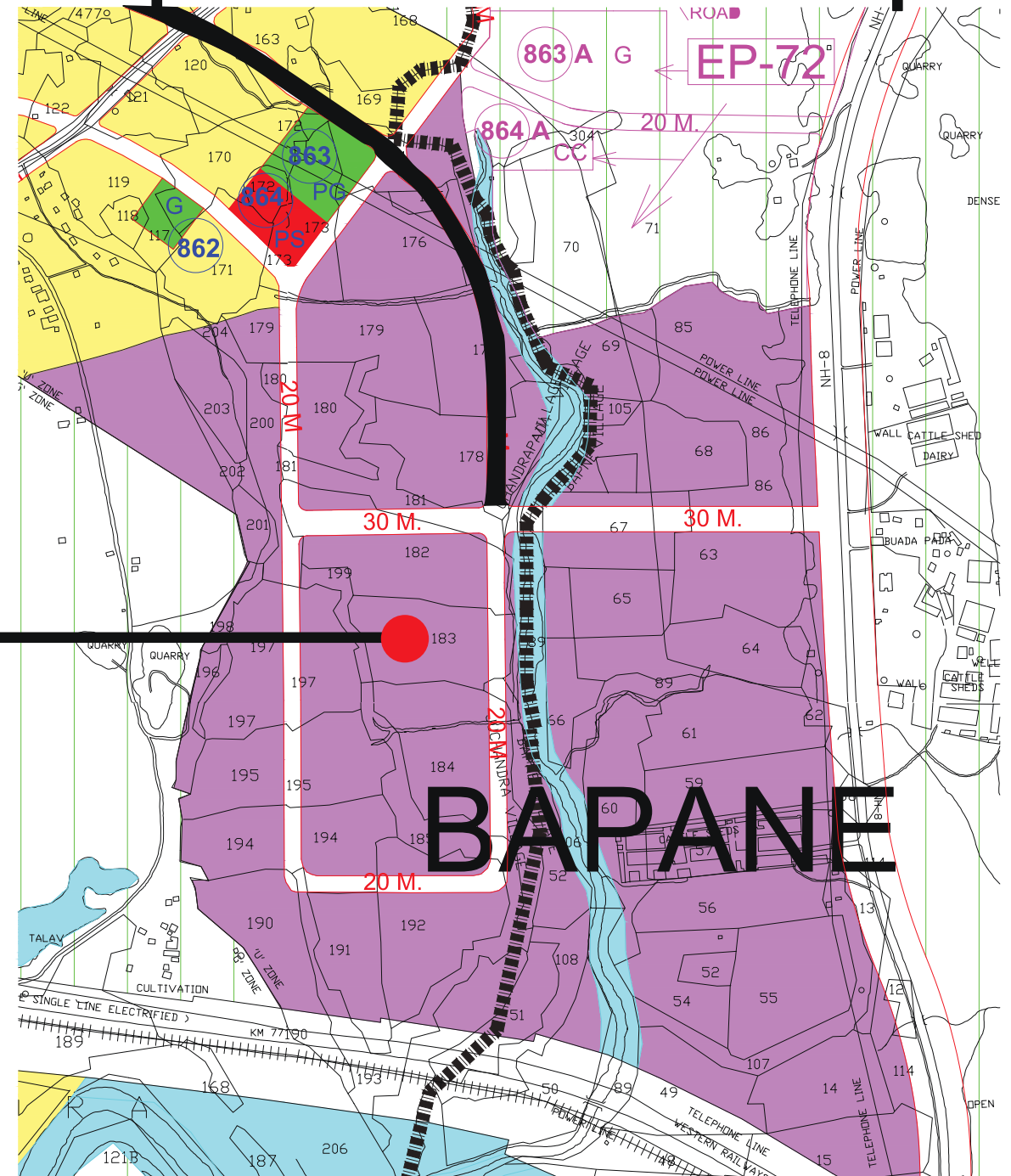
TOTAL LAND PARCEL - 1,67,036.07



PROJECT

STATION ROAD

NATIONAL HIGHWAY





# ABOUT MAPLE INDUSTRIAL ESTATE

Maple industrial estate is thoughtfully designed to cater the diverse needs of our clients, providing a wide range of industrial gala which suits your business needs . We understand the importance of cost effective solutions and have tailored our offerings accordingly, ensuring that businesses can thrive & grow within our premises





# A DYNAMIC LANDSCAPE SHAPING THE FUTURE THROUGH ADVANCING INFRASTRUCTURE



**NH 48 HIGHWAY**



**AIRPORT**



**PETROL PUMP**



**RAILWAY STATION**



**HOSPITAL**



**RESTAURANTS**

# AMENITIES CURATED TO EMPOWER BUSINESS BRILLIANCE



Ample Parking  
& Landscape



Directional Signages



Fire Fighting  
Fire Hydrants



Water  
Supply



Rain Water  
Harvesting



External Lighting  
To Common  
Areas And Roads



24/7 Security  
Deck



Water Storage Tank  
& Pump Room



RCC Roads



Wide  
Internal Roads



Industrial  
Zone



Storm Water  
Drainage



3 Service Lift

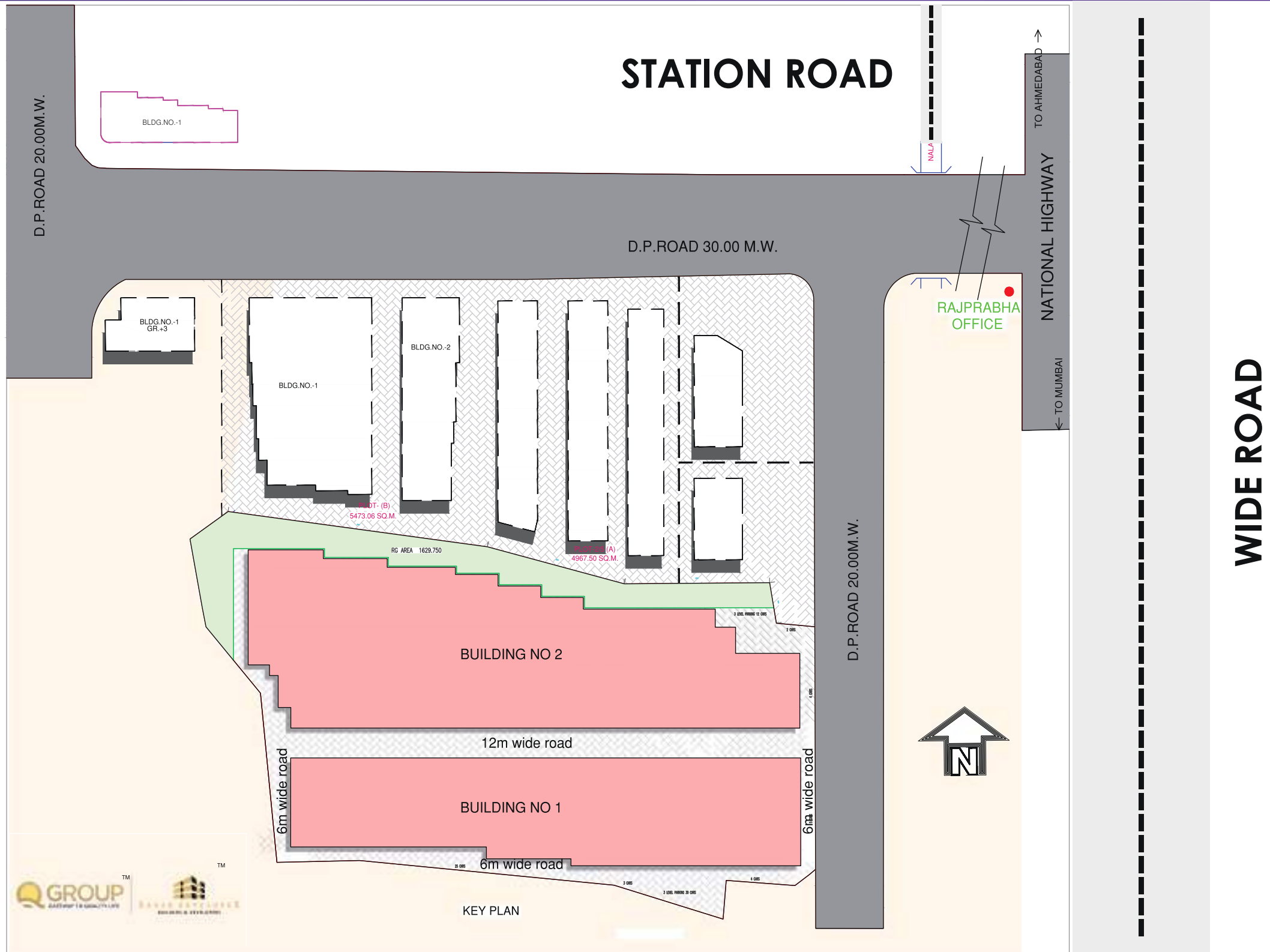


Lofty Facade



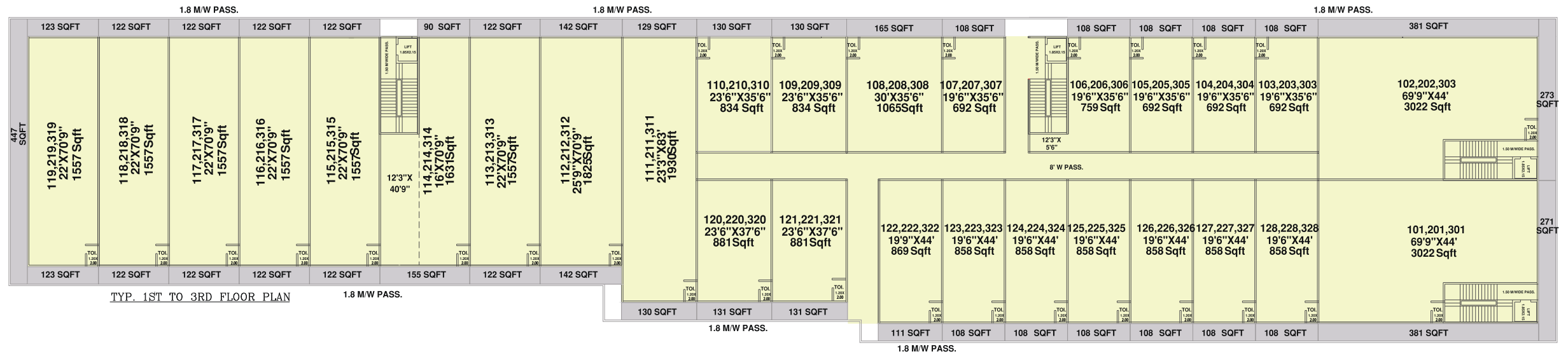
Dg Set For  
Backup Power

# MASTER PLAN

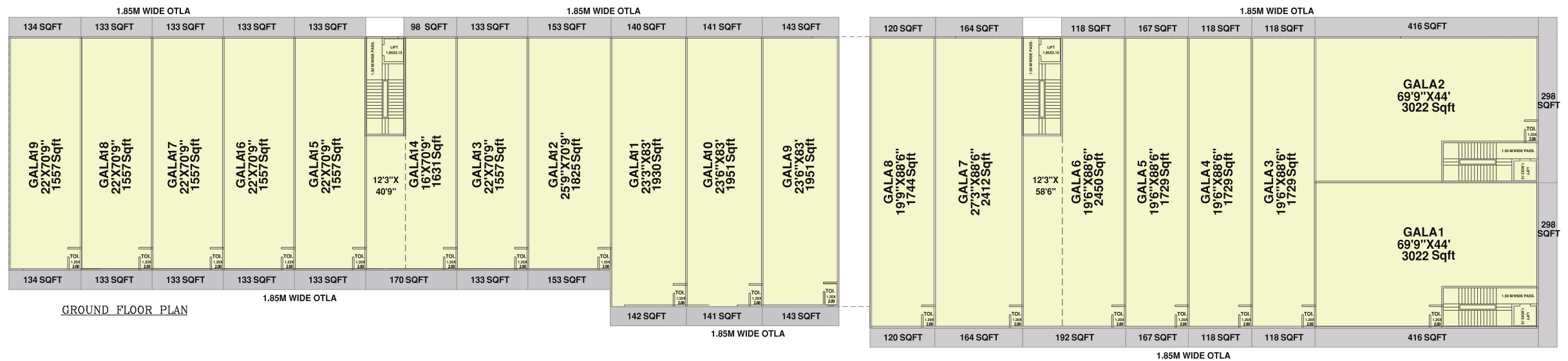




# FLOOR PLAN



## 1ST,2ND AND 3RD FLOOR

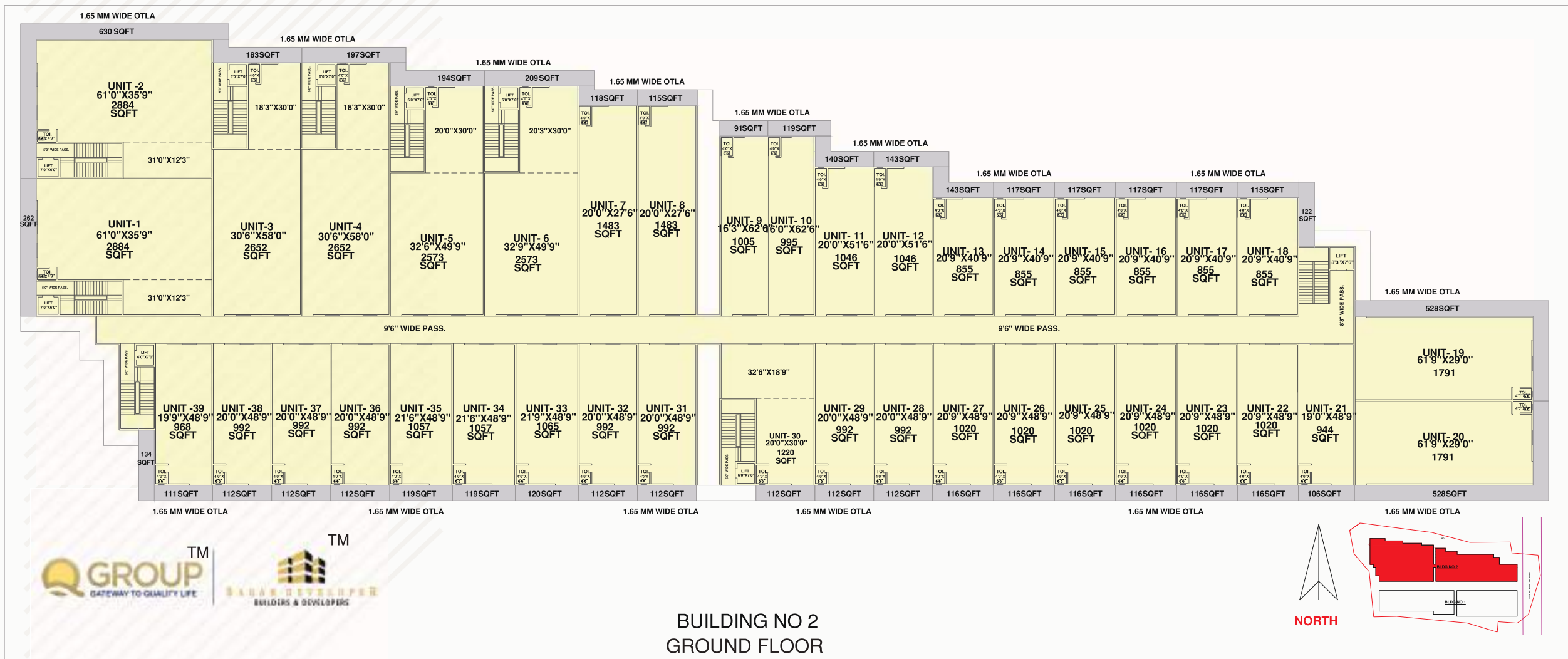


## BUILDING NO 1 GROUND FLOOR



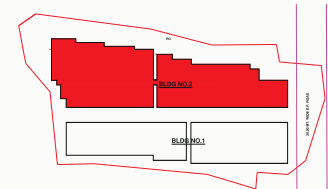


# FLOOR PLAN



BUILDING NO 2

1ST,2ND AND 3RD FLOOR











YOUR PATHWAY TO SUCCESS, CONNECT WITH US TODAY

### **HEAD OFFICE**

Sagar Developer, 03 Ramji Patel Compound, Near Mallika Hotel Pathanwadi,  
Malad East

### **SITE ADDRESS**

Maple Industrial Estate, Rajprabha, Opposite Karizma Dhaba,  
Next to Bharat Petrol pump, Bapane, Chandrapadha, Naigaon East, Dist. Palghar. 401 208.

---

CONTACT: 8373000777/ 9055666111

